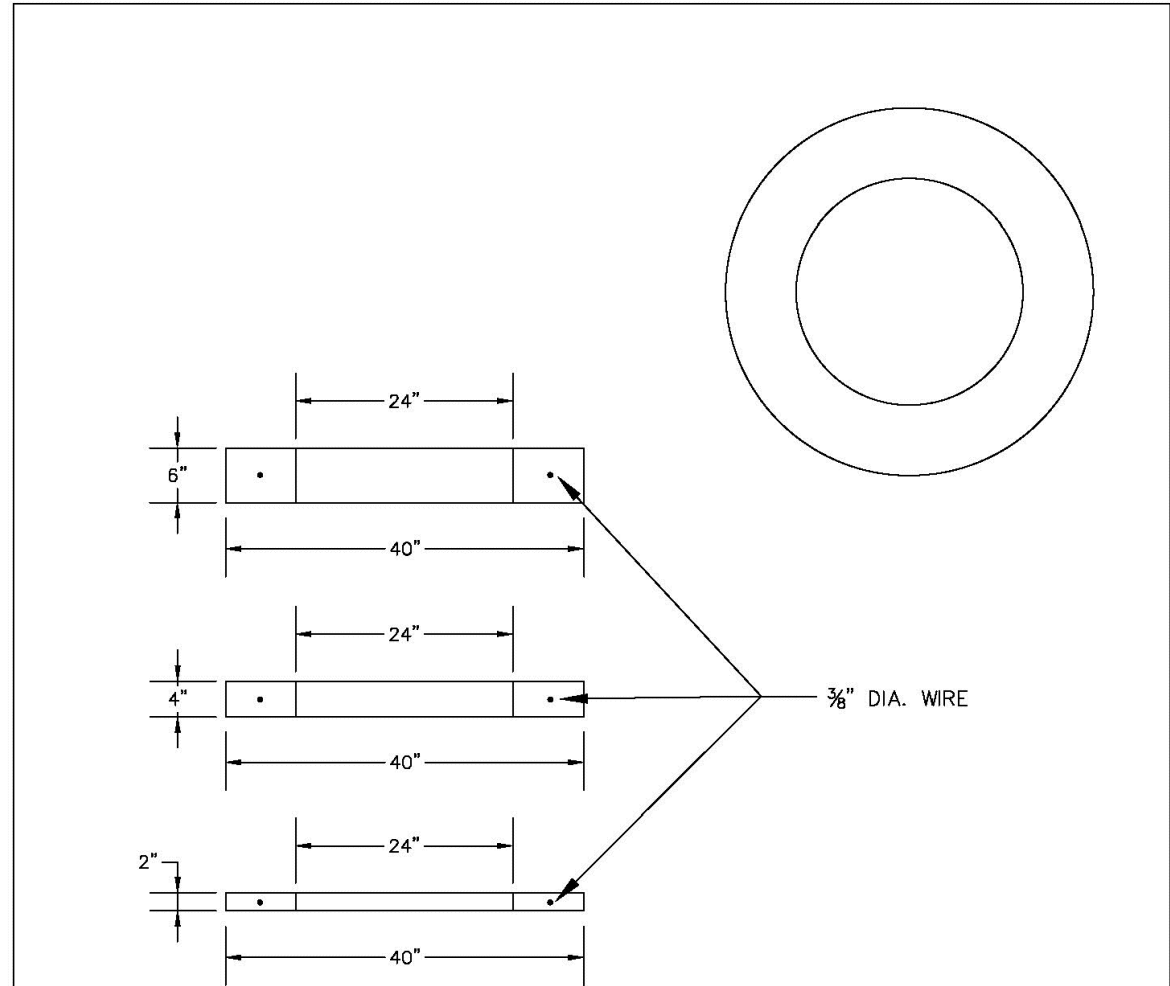


Plotted By:Abdoul Emmanuel Sheet:Mill Creek-Pompano Layout-C-405 WATER & SEWER DETAILS September 09, 2025 05:38:50pm K:\FTL_Civil\043 jobs\043175014 Mill Creek-Pompano\Design\CADD\PlanSheets\C-UTL-DET.dwg
This document, together with the concepts and designs presented herein, is an instrument of service, as an instrument of service, is intended only for the specific purpose and client for which it was prepared. Reuse of and improper reliance on this document without written authorization and adaptation by Kimley-Horn and Associates, Inc. shall be without liability to Kimley-Horn and Associates, Inc.

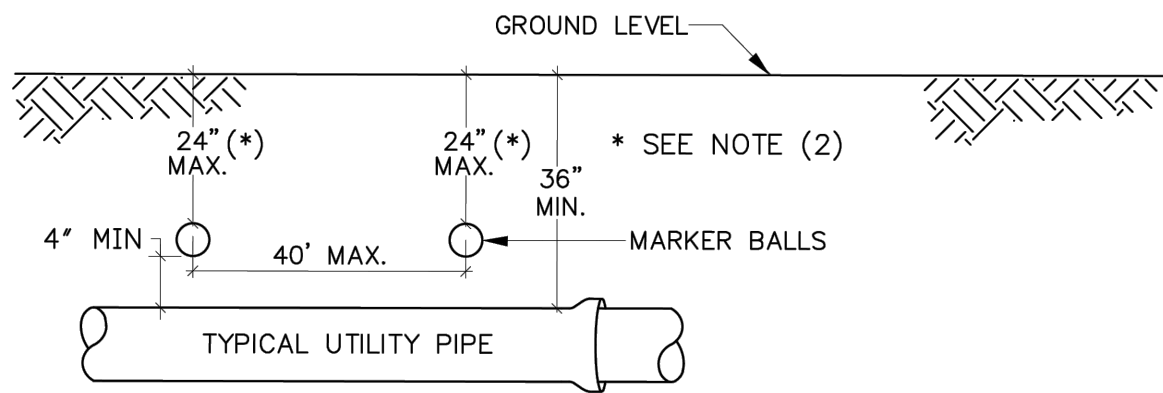


CONCRETE GRADE RINGS

NOTES:
2" 0.054 c.y. / 220 lbs
4" 0.108 c.y. / 430 lbs
6" 0.162 c.y. / 650 lbs

ENGINEERING STANDARDS 2025

REVISIONS		ENGINEERING DIVISION CITY OF POMPAÑO BEACH	CONCRETE GRADE RINGS	DATE: JUNE 2022 DWG. NO. 216-2
BY	DATE			
SCALE: N.T.S.				



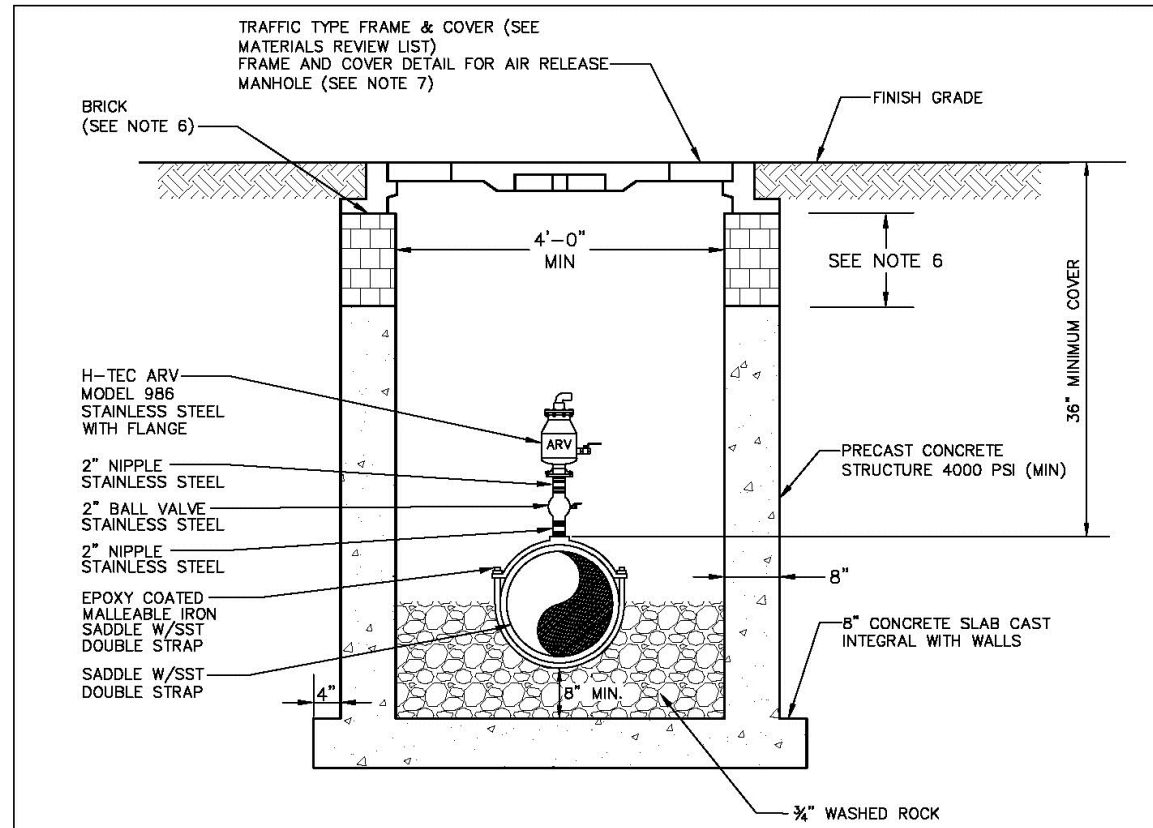
GENERAL NOTES:

- ALL UTILITY PIPE SHALL BE INSTALLED WITH 4"Ø MARKING BALLS PLACED EVERY 40' AND AT EVERY FITTING, FOR IDENTIFICATION AND WARNING PURPOSES, BURIED ABOVE THE PIPE AT A MAXIMUM DEPTH OF 24 INCHES OR AS APPROVED BY THE OWNER. IT SHALL BE COLOR CODED AND WORDED AS FOLLOWS:
SEWER SYSTEM
A. COLOR: GREEN
B. LETTERING: SANITARY SEWER
C. FREQUENCY OF MARKER BALLS SHALL BE 121.6 Khz.
D. THE MARKER BALLS CAN BE BURIED IN ANY ORIENTATION.
THE MARKER BALLS SHALL BE DETECTABLE BY STANDARD METAL DETECTION EQUIPMENT AND SHALL BE MANUFACTURED BY TEMPO OR 3M LOCATOR SYSTEM OR EQUIVALENT (FREQUENCY 121.6 Khz)
- FOR LARGE DIAMETER PIPE INSTALLED AT DEPTHS BELOW 4'-0" MARKER BALLS SHALL BE PLACED AT A MAXIMUM DEPTH OF 4'-0" BELOW GRADE *

SEWER PIPE IDENTIFICATION

ENGINEERING STANDARDS 2019

REVISIONS		ENGINEERING DIVISION CITY OF POMPAÑO BEACH	SEWER PIPE IDENTIFICATION	DATE: JAN 2012 DWG. NO. 207-1
BY	DATE			
S.S.	01/30/12			
SCALE: N.T.S.				



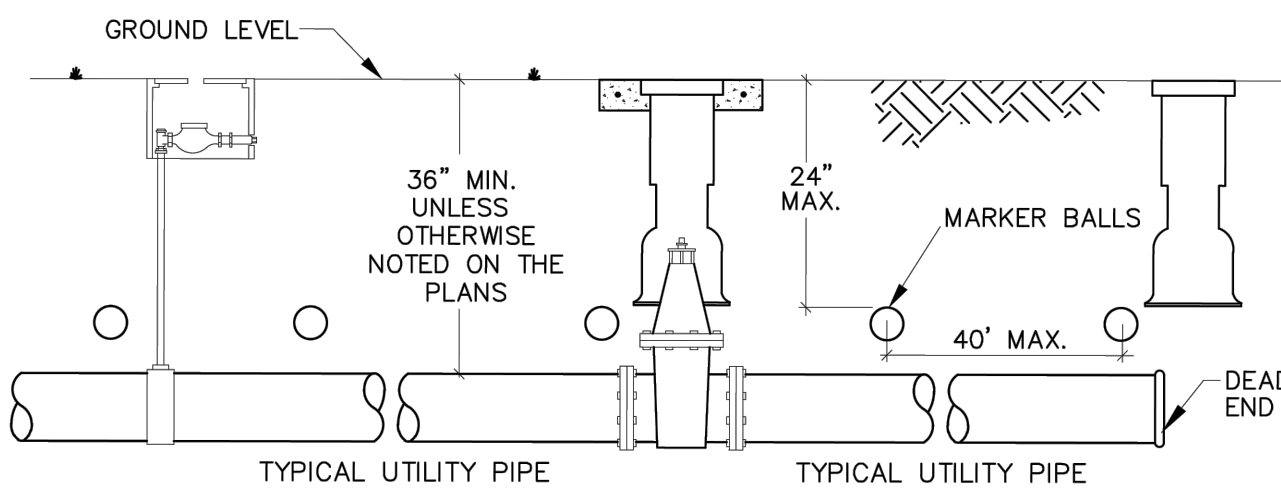
NOTES:

- BALL VALVE, PIPING, ETC., TO MATCH AIR RELEASE VALVE DIAMETER.
- MISCELLANEOUS ARV ACCESSORIES SHALL BE SELF-CONTAINED
- RAINEX AT ALL RISER JOINTS WITH GROUT ON INSIDE AND OUTSIDE AT ALL RISER JOINTS.
- MANHOLE FABRICATION SHALL BE IN ACCORDANCE WITH ASTM C-478, LATEST STANDARD.
- COAT INSIDE AND OUTSIDE OF MANHOLE WITH PROTECTIVE COATINGS.
- THE CHIMNEY AREA SHALL BE A MINIMUM OF 4" AND A MAXIMUM OF 12" IN HEIGHT. A MINIMUM OF 3 COURSES OF BRICK SHALL BE INSTALLED. SET IN 2 STRIPS OF SEALANT/ADHESIVE COMPOUND ON EACH SEALING FACE.
- SET MANHOLE FRAME ON 2 STRIPS OF SEALANT PLUS A BED OF PORTLAND CEMENT AND SILICA SAND. BRING MORTAR UP OVER FRAME.

COMBINATION SEWER AIR RELEASE VALVE

ENGINEERING STANDARDS 2025

REVISIONS		ENGINEERING DIVISION CITY OF POMPAÑO BEACH	FORCE MAIN MANHOLE	DATE: DEC 2023 DWG. NO. 217-1
BY	DATE			
A.S.	12/28/22			
A.S.	12/11/23			
SCALE: N.T.S.				



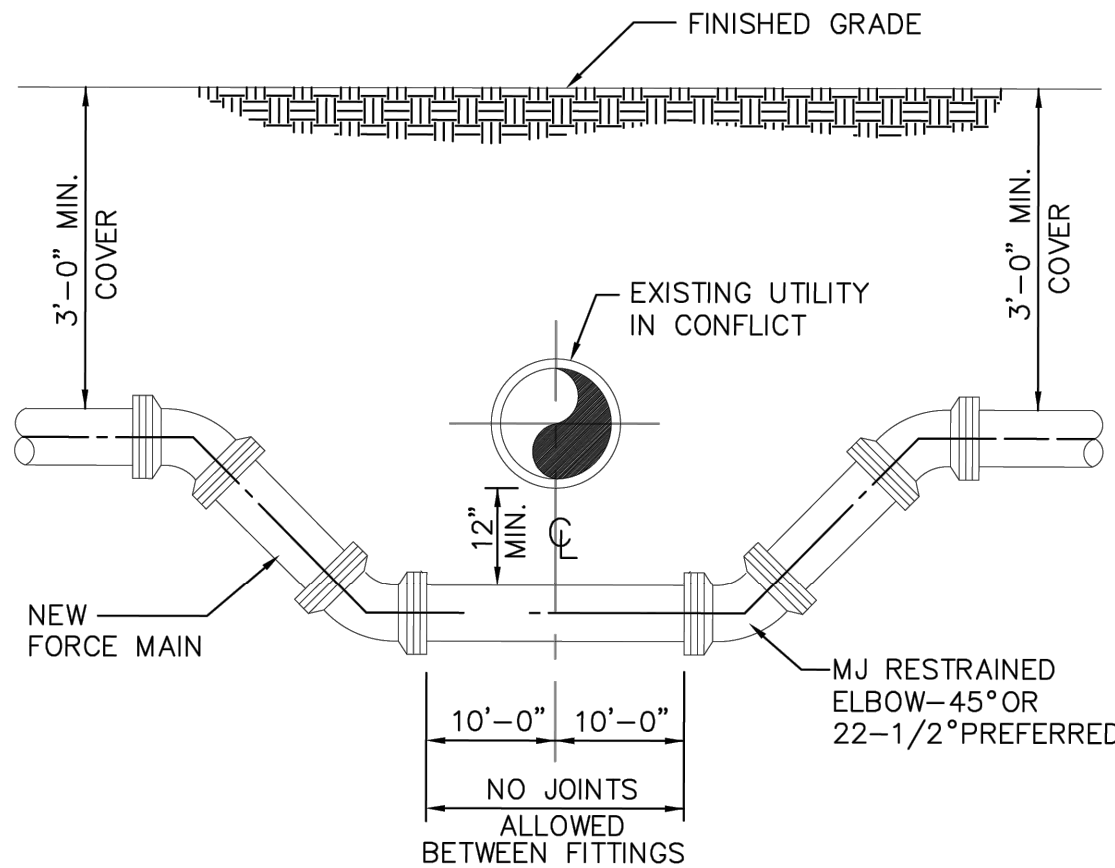
GENERAL NOTES:

- ALL NONMETALLIC PIPE SHALL BE INSTALLED WITH 12 THHN SOLID COPPER TRACING WIRE.
- THE MARKER BALLS MUST BE INSTALLED DIRECTLY ABOVE THE PIPE.
- MARKER BALLS SHALL BE INSTALLED AT 40' O.C.
- BALL COLOR CODING:
SANITARY SEWER SYSTEM: GREEN

UTILITY PIPE AND MARKER BALLS LOCATION

ENGINEERING STANDARDS 2019

REVISIONS		ENGINEERING DIVISION CITY OF POMPAÑO BEACH	UTILITY PIPE AND MARKER BALLS LOCATION	DATE: JAN 2012 DWG. NO. 208-1
BY	DATE			
S.S.	01/30/12			
SCALE: N.T.S.				



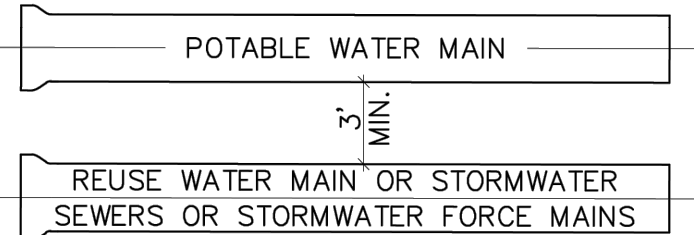
NOTES:

- WHERE CONDITIONS PERMIT, PIPE DEFLECTION MAY BE USED INSTEAD OF BENDS TO OBTAIN THE MINIMUM CLEARANCE. FACTORY OFFSETS MAY BE USED.

TYPICAL CONFLICT DETAIL

ENGINEERING STANDARDS 2019

REVISIONS		ENGINEERING DIVISION CITY OF POMPAÑO BEACH	TYPICAL CONFLICT (SEWER)	DATE: JUNE 1996 DWG. NO. 206-1
BY	DATE			
S.S.	JUNE 2005			
S.S.	02/13/12			
SCALE: N.T.S.				



A MINIMUM HORIZONTAL SEPARATION 3' (OUTSIDE TO OUTSIDE), SHALL BE MAINTAINED BETWEEN POTABLE WATER MAINS AND STORMWATER SEWERS, STORMWATER FORCE MAINS AND REGULATED REUSE WATER MAINS.

A MINIMUM HORIZONTAL SEPARATION 3' (OUTSIDE TO OUTSIDE), SHALL BE MAINTAINED BETWEEN EXISTING OR PROPOSED VACUUM-TYPE SANITARY SEWER. * SEE NOTE D(1)(B).

A MINIMUM HORIZONTAL SEPARATION OF 6' (OUTSIDE TO OUTSIDE), SHALL BE MAINTAINED BETWEEN POTABLE WATER MAINS AND EXISTING OR PROPOSED GRAVITY-OR PRESSURE TYPE SANITARY SEWER, WASTEWATER FORCE MAIN OR NOT REGULATED REUSE WATER MAIN. ** SEE NOTE D(1)(C).

MINIMUM HORIZONTAL SEPARATION REQUIREMENTS FOR POTABLE WATER, REUSE, STORMWATER AND SEWER LINES

ENGINEERING STANDARDS 2019

REVISIONS		ENGINEERING DIVISION CITY OF POMPAÑO BEACH	MIN. HORIZONTAL SEPARATION FOR SANITARY SEWER	DATE: JAN 2012 DWG. NO. 209-1
BY	DATE			
S.S.	01/30/12			
SCALE: N.T.S.				

Kimley»Horn

© 2025 KIMLEY-HORN AND ASSOCIATES, INC.
8201 PETERS ROAD, SUITE 2200, PLANTATION, FL 33324
PHONE: 954-535-5100 FAX: 954-739-2247
WWW.KIMLEY-HORN.COM REGISTRY No. 35106

LICENSED PROFESSIONAL

KHA PROJECT 043175014

DATE 9/4/2025

SCALE AS SHOWN

DESIGNED BY GVF

DRAWN BY EA

CHECKED BY GVF

DATE:

MODERA POMPAÑO BEACH
PREPARED FOR
MCRT INVESTMENTS LLC
FLORIDA
POMPAÑO BEACH

SHEET NUMBER

C-405

10/15/2025

DRC

PZ25-12000028